

March 2009



Nottingham Declaration Strategy



Cllr Lyn Barton

Portfolio Holder for Planning and Regeneration



There is now global scientific consensus that human activity is impacting on climate change and that action needs to be taken now to avoid irreversible damage to our planet. UKCIP scenarios show that the low lying region of the East of England is at significant risk from sea level rises, and there will be many other problems but also opportunities that arise from a changing climate. Colchester has made tremendous strides towards tackling the causes and effects of climate change over the last two years and as a Council we will go from strength to strength in this area. Climate Change is an important and relevant

issue for all of us and Colchester Borough Council aims to support everyone in the borough to do their bit and be well prepared for any challenges climate change may pose in the future.

This strategy sets out the Council's four priorities for mitigating and adapting to climate change. We aim to use our existing resources and influence across the Borough whilst developing new and innovative projects to lead the way on this issue.

We have made a strong statement of our commitment by signing the Nottingham Declaration in February 2007. The Nottingham Declaration Action Plan will support the Council to fully embrace its role as a community leader in this area and ensure that carbon dioxide emissions are reduced across the borough. It will also ensure that appropriate planning is in place to help us adapt to a changing climate.

Adrian Pritchard

Chief Executive, Colchester Borough Council



Colchester Borough Council is the organisation charged with providing community leadership for the area and our communities. The wellbeing of the environment is part of that community leadership and is integral to the residents, businesses and visitors we serve. Climate change, something that will affect us all, is high on the agenda. With scientific evidence making clearer the effects we are having on global warming, we must take strong action to mitigate our own impacts as a Council and take a lead in supporting the wider community to do the same.

Lowering CO₂ emissions not only reduces Colchester's impact it also has benefits for the wider financial and sustainable environment. Increased energy efficiency is an example which not only results in a reduction in CO₂ it also results in lower energy expenditure for local businesses, increasing overall profitability. The same principles also help to lower domestic fuel bills, helping the most vulnerable to keep warm and well.

Our ability to adapt to the effects of climate change will also be key in the future. As a Council we need to plan for the potential impacts of climate change to ensure business continuity, and the provision of the best possible services. By maximising our ability to diversify we will be able to benefit from a range of opportunities that could arise from a changing climate. We will also support the wider community to be prepared and consider how they may be affected.

This strategy clearly sets out how the Council will support a reduction in CO₂ emissions across the borough, working with partners to ensure that a real sustainable difference is made.

It is up to each of us to do what we can to ensure that the vision set out in this strategy becomes a reality.

Introduction

Colchester Borough Council is committed to tackling the causes and effects of climate change

In February 2007 Colchester Borough Council (CBC) signed the Nottingham Declaration on Climate Change. The declaration is a tool to secure commitment from UK Councils to tackle the causes and effects of climate change. CBC believe climate change is real and is accelerated by human activity, and this document sets out the Council's strategy for mitigating (reducing our impact) and adapting to these issues. Through this commitment CBC will fully embrace its role as a strong community leader on climate change.

The aim of the strategy is to set out recommendations on how the Council can take an innovative approach that addresses local and global impacts. An action plan has been developed to monitor progress and ensure that improvements and targets are met, whilst improving and preserving the local environmental quality.

CBC supports the view that there are enormous environmental, social and economic risks and benefits associated with climate change. As a coastal authority, it is a real issue for Colchester. It is predicted that the East of England, as it is low-lying, will be at significant risk of coastal flooding. However it is also well placed to take advantage of opportunities climate change may present⁽¹⁾. By improving energy efficiency we will not only help to reduce our CO₂ emissions but could potentially improve social and economic problems such as fuel poverty, whilst supporting the local business community. By utilising both public and private partnerships, through this strategy we will establish Colchester as a leading Council on climate change.

Objectives

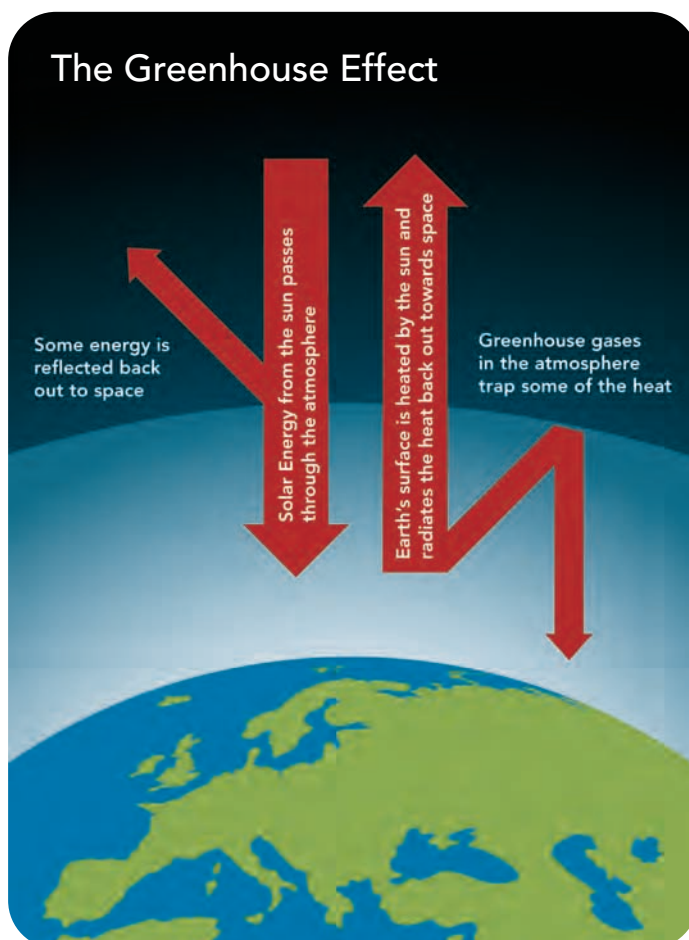
- **Reducing our Carbon Footprint:** Reduce the amount of CO₂ produced from our services and operations and increase the use of renewable energy in the borough
- **Becoming a community leader:** To lead by example and take forward our knowledge, partnerships and resources to help and encourage the wider community to become more sustainable
- **Delivering sustainable services:** To ensure that sustainability and carbon reduction is embedded into all of our services and operations and to ensure that we are in a position to exploit opportunities created through a change in climate
- **Using our powers:** To encourage businesses and residents to be more sustainable by using our influence through procurement, private sector housing and spatial policy.

Our vision

Colchester Borough Council is fully committed to reducing its impact and adapting to the biggest global challenge we have faced – climate change. We aim for climate change and sustainability to be fully embedded into all Council services and to use our knowledge, resources and power to influence the wider community. We want everyone in Colchester to be aware of the impacts and understand what they can do to mitigate and adapt to climate change.

This document links to other strategies including the Waste to Resources Strategy, Sustainable Communities Plan and the Local Development Framework for the following reasons:

- To meet commitments under the Nottingham Declaration and progress in a joined-up way
- To enable the Council to keep track of all targets in relation to climate change
- To establish a clear contribution to the Council's commitment to 'Colchester's Carbon Challenge' through the Local Strategic Partnership (LSP), Colchester2020
- To enable climate change to be embedded into all Council services and policies
- To provide an additional way of securing potential funding for any climate change related initiatives.



About climate change

What's all the fuss about?

The climate of the Earth has changed many times in the past for various reasons. However there is now scientific consensus that man-made emissions are accelerating this change. The effects in the UK include rising sea levels, changes in weather patterns, higher temperatures and worsening pollution problems. Climate change is already having an effect – the large-scale flooding in the North and West of England during 2007 may reflect what we as an authority will have to deal with in coming years.

We must be prepared for negative impacts of climate change but also be ready to maximise new opportunities it may create. For example, warmer temperatures could help to further develop the tourism industry within the borough.

Headline Impacts for the East of England

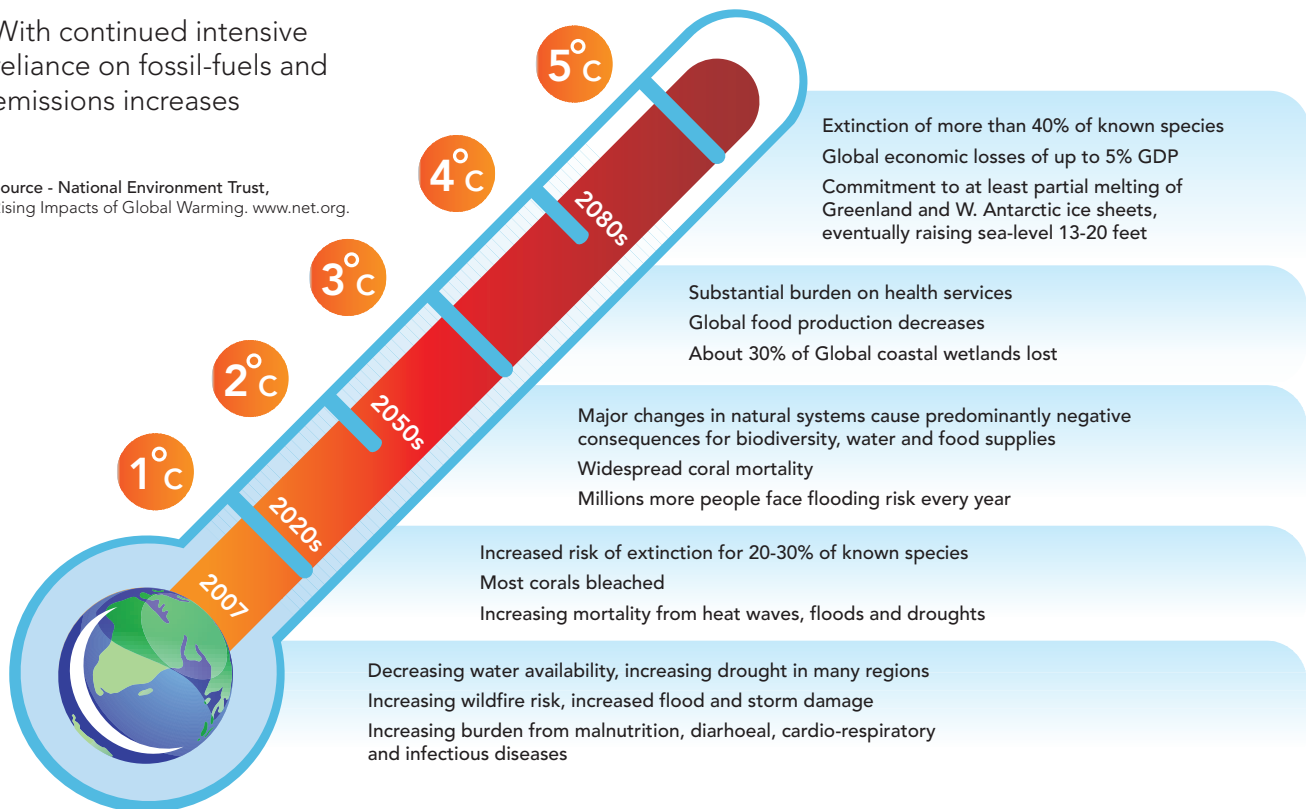
Scientists from UK Climate Impacts Programme (UKCIP) have already carried out a great deal of research for the East of England. They have predicted that by the 2080s the East of England can expect a sea level rise of approx 54 cm, winter rainfall to increase by up to 30%, though summer rainfall may fall by 20% over the same period, whilst average daytime temperatures will increase by between 1° and 5°C⁽¹⁾.

There is now overwhelming evidence to suggest that not only is climate change happening but it is directly related to human activity. This is the message given from a report by the Inter-governmental Panel on Climate Change (IPCC).⁽²⁾

Rising Impacts of Global Warming

With continued intensive reliance on fossil-fuels and emissions increases

Source - National Environment Trust,
Rising Impacts of Global Warming. www.net.org.



We must not ignore the global implications of climate change which show that some of the world's poorest countries could be the most seriously affected. We have the power, resources and technologies to act on this now and must accept our responsibility to the developing world by taking a lead on these issues.

The human-produced gases from the burning of fossil fuels such as Carbon Dioxide and Nitrogen Oxides not only contribute to the 'enhanced greenhouse effect' that causes climate change but are often also responsible for other issues such as smog and acid rain. A reduction in these emissions will therefore have many other positive effects. A major new drive is required in Colchester to link improvements in energy efficiency, new buildings, air quality, transport networks, coastal defence and increase the use of renewable sources of energy.

It is clear that unless we make significant changes now, the way in which we all live in Colchester will be affected by climate change. The EU and UK have defined a safe level of temperature increase to be 2°C. Research carried out by the Tyndall Centre for Climate Change Research, has found that it is feasible to keep CO₂ to a level that would give a 70% chance of exceeding 2°C and a 50% chance of exceeding 3°C⁽³⁾.

One misconception is that there is plenty of time to deal with this issue. In actual fact all of the CO₂ emissions we are pumping into the atmosphere every day will stay around for about 100 years. This is where we have the problem of cumulative emissions, today's emissions will add to yesterday's and they will add to tomorrow's. To put this in context we must consider that we have a 'Carbon Budget'. Between 2000 and 2050 the UK's budget is 4.8 billion tonnes of CO₂. However we have already used ¼ of our budget between 2000 and 2006 (1.2 billion tonnes CO₂). To stay within our budget we must only use the remaining ¾ which would require a 9% reduction in CO₂ per annum.

Is it already too late?

No – evidence shows that we have time to mitigate global warming before the effects are irreversible. However if we take into account research by the Tyndall Centre it is clear that we must take action to reduce emissions now to achieve a cumulative reduction by 2050. The Stern Review Report, an independent review commissioned by the Chancellor of the Exchequer, was released in October 2006. The report looks at the evidence and from this builds an understanding of the economics of climate change. This review states 'The benefits of strong, early action on climate change outweigh the costs' which essentially means that although we need to put money into reducing emissions now, this is an investment for our future, without which the cost would be a lot more in the long term. Without action now it is predicted that there will be an increase in resource use, levels of pollution and generation of waste rather than a reduction. The point is not that it is too expensive to do something about climate change but rather that it would be too expensive to ignore⁽⁴⁾.

Stern Review – Reducing greenhouse gas emissions⁽⁴⁾

1. Reduce the demand for emissions-intensive goods and services
2. Increased efficiency, which can save both money and emissions
3. Action on non-energy emissions, such as deforestation
4. Switching to lower-carbon technologies for power, heat and transport.

Economic benefit of reducing CO₂ by 30% in Colchester.

If everyone in Colchester reduced their CO₂ by 30% we could save a total of £132,938,820. Just think what we could spend all that money on.

Colchester Carbon Challenge – Business Case (calculated using Stockholm Environment Institute data)⁽⁵⁾



What is being done about it?

Globally

The Kyoto Protocol is an international agreement linked to the United Nations' Framework Convention on Climate Change. In 1997 the UK signed the legally-binding agreement which has the objective of reducing greenhouse gases that contribute to climate change 5.2% below 1990 levels by 2012. To meet this target the Government developed a National Climate Change Programme to achieve a marked change in people's habits across the country over the next decade⁽⁶⁾.

Nationally

The UK Government passed the 'Climate Change Bill' in 2008 which sets a national target of an 80% reduction in Carbon Dioxide by 2050. At present this is recognised as a leading policy in the world. There is also a target stating that 10% of all UK electricity is to be supplied by renewable energy by 2010⁽⁷⁾.

Regionally/Locally

Working with Essex County Council on the Local Area Agreement, CBC now has a target reduction in Carbon Dioxide of 12.6% by 2012. This target is one of the National Performance Indicators which means we are required to report annually to government on how we are progressing.

Under Section 2 of the Local Government Act 2000, Councils have the power to do anything they consider likely to promote the economic, social and environmental well-being of their areas in order to respond to the needs of their local communities. As a Council we aspire to continuing action on climate change that will ultimately achieve a sustainable borough for all those who live, work and visit us⁽⁸⁾.

What are the benefits of acting now?

Cost Saving Energy, be it gas, electricity or petrol is becoming increasingly expensive. If we are more energy efficient we will be able to reduce these energy costs, benefiting Colchester's economy whilst reducing CO₂ emissions.

Risk Management We must ensure business continuity and be prepared for the 'worst case scenario' with regards to climate change so that Colchester's businesses and organisations will be able to stand up to pressures in the future.

Health and Lifestyle Gases that cause climate change are also responsible for pollution which can cause many health problems such as asthma. By reducing our carbon emissions we will be able to improve air quality and support CBC's vision of being a clean and green borough.

Global

Kyoto Protocol 5% reduction in greenhouse gases by 2012 (signed in 1997). It is likely that any succeeding target will be much higher.

National

Climate Change Bill 80% reduction by 2050.

National Performance Indicators 5 of our 25 priorities relate to Climate Change and environment.

Regional

LAA2 Essex County Council
Regional Cities East

Colchester/CBC

Colchester2020 'Carbon Challenge'
30% reduction by 2020.

Nottingham Declaration Action plan to incorporate all Council targets, schemes and projects borough-wide to mitigate and adapt to Climate Change.

LACM 25% reduction by 2012
(within Council operations).

Priority 1 Reducing our Carbon Footprint

Local Authority Carbon Management programme (LACM) We aim to reduce our own carbon footprint by 25% by 2012

Carbon Reduction Champions The champions will help us to make staff more aware of how they can be more energy efficient at work

Sustainability Action Group A group made up of employees from different service areas who work together to make CBC more sustainable and energy efficient

Renewable energy CBC will be looking into ways of providing energy for itself and also for across Colchester by using renewable sources

CBC felt that by reducing its own emissions it can provide an example to others in the wider community. The main aim of this priority is to ensure that climate change and sustainability are at the top of the agenda for the Council. It is imperative that we have full backing from senior management and our Cabinet, to show others that this is a serious issue and that it requires action now. Signing the Nottingham Declaration was the first step to showing this commitment.

Local Authority Carbon Management (LACM)

Where are we now?

We have adopted the LACM Strategy and Implementation Plan. Energy saving projects are underway and we have 19 Carbon Reduction Champions (CRC) who lead an awareness campaign in their work area.

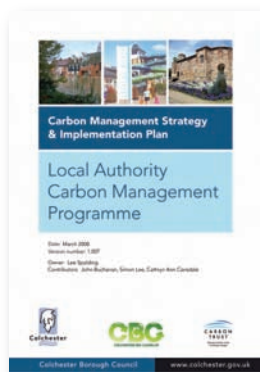
Where do we want to be?

Continue progress through the LACM action plan to achieve a 25% reduction in CO₂ by 2012. We want a CRC to lead the awareness campaign in every service area.

How do we intend to do this?

An LACM core group meets monthly to monitor progress and each project has a lead officer to monitor progress. We will continue the awareness campaign and will continue to recruit CRCs in each service area.

Local Authority Carbon Management programme (LACM)



We are committed to reduce our CO₂ emissions by 25% by 2012 and are working with the Carbon Trust to do this. The 'value at stake' has been calculated to be £3.2 million which essentially means that by meeting our target we could avoid paying an extra £3.2 million in energy bills. To achieve this level of reduction we have considered all areas of the Council and identified where we can make changes. We

have held a number of councillor and staff workshops to keep people informed and encourage them to get involved. The LACM Strategy and Implementation Plan has now been agreed and adopted and the first phase of projects is well underway. A full list of LACM projects can be found in the Nottingham Declaration Action Plan.

Reducing the amount of energy we waste

It is incredible when we look into the energy we use, just how much of it goes on absolutely nothing. Things left on standby, lights being left on. It's all very simple but makes a huge difference to our carbon footprint.

Our staff awareness campaign is not the biggest saver in energy out the LACM projects but if each member of staff takes their new habits home, it could make all the difference. We started by encouraging people to 'Switch Off' office equipment when not in use, and now have a group of Carbon Reduction Champions who volunteered to be the facilitators of the campaign within their own department.

The target reduction in CO₂ for the awareness campaign is to be using 57 tonnes less per year by 2012. This would equate to a financial saving of almost £14,000 per year. The campaign started in August 2007 and within a year managed to reduce the amount of CO₂ by 49 tonnes, showing that we are well on our way to achieving this target. We will be continuing the LACM awareness campaign until 2012 and beyond and will focus on different aspects of energy usage, recycling and also transport.

CBC has taken on board that we may need to invest a little to lower our carbon footprint, but ultimately the cost of the energy saved will more than make up for what we put in. We have developed projects that will help to reduce the emissions from our buildings and make them more sustainable. This programme has also allowed us to take advantage of existing projects by making them more sustainable. For example, refurbishment of Colchester's fitness pool has been developed to make the pool more energy efficient thus reducing its environmental impact.

Sustainability Action Group

The Sustainability Action Group (SAG) meets every two months and is a group made of officers from across all Council services. These meetings allow us to share ideas and discuss how to take forward projects that will make the Council more sustainable. The SAG group members will act as a critical friend for the Nottingham Declaration action plan and will be consulted at every stage.

Once the strategy is adopted this group will ensure that implementation of the actions takes place. They will then monitor and review progress and co-ordinate our future actions under our Nottingham Declaration Commitment. This group will become the focus of expertise on sustainability within the Council by providing support and advice to services as they address the issues and mitigate the impacts of climate change.



Refurbishment of the Fitness Pool at Colchester Leisure World – estimated saving 412 tonnes CO₂



Replacement of heating system at Colchester Castle – estimated saving 18 tonnes CO₂



Draught sealing of Colchester Town Hall windows – estimated saving 23 tonnes CO₂

Sustainability Action Group (SAG)

Where are we now?

The SAG meets every two months to discuss sustainability and energy saving initiatives.

Where do we want to be?

SAG to monitor progress from across the Council on the Nottingham Declaration Action Plan.

How do we intend to do this?

We will continue to use SAG meetings to engage services to drive positive change across the Council.

Renewable Energy

Where are we now?

We have no sources of renewable energy. We are using biodiesel in our vehicle fleets.

Where do we want to be?

We want to source renewable energy for our buildings and develop a renewable energy supply for Colchester. We will promote the use of renewable energy to residents and businesses and promote more energy efficient cars/sustainably sourced biodiesel.

How do we intend to do this?

We will use partnerships to establish an advice scheme for people in Colchester. We will consider renewable energy through our LACM. We will support the development of a wind turbine in the North of Colchester and will include aspects of sustainability through the Local Development Framework.

Renewable Energy

The energy used across the borough is increasing in line with national trends and developing renewable energy sources could help to offset this. The use of renewable energy has the potential to reduce greenhouse gas emissions, improve air quality, reduce fuel poverty, increase prosperity, generate local jobs alongside the electricity and could also provide an income stream for the local authority.

Within the Council our waste and recycling collection fleet has already started to use biodiesel. As a massive user of fuel within the Council, switching to renewable fuels will make a significant reduction to our carbon footprint. In 2006/07 the fleet used an estimated 400,000 litres of biodiesel. Based on the assumption that biodiesel emits 55% less Carbon Dioxide than normal diesel and that 1 litre of normal diesel uses 2.7kg of CO₂, we are already saving 486 tonnes of CO₂ a year.

Plans have been put forward to have a wind turbine in the North of Colchester and we are researching in to the best way of going about this. This is a fantastic opportunity for Colchester to provide carbon neutral energy for the borough.

Energy sources such as wind energy, solar, combined heat and power, ground source heat pumps and Photovoltaics (alternative to solar) will all be considered by the Council. We are also looking to develop a way to provide advice and funding information for people considering installing renewable energy in their homes and local businesses.

Our Sustainable Construction Supplementary Planning Document (SPD) offers advice on the different types of renewable energies technologies, including prices and planning considerations.



Priority 2 Being a Community Leader

Colchester 2020 Our Local Strategic Partnership (LSP) set Colchester a Carbon Challenge to reduce CO₂ by 30% by 2020

CRed This is a scheme where people can pledge to improve their carbon footprint

Awareness raising We want everyone in Colchester to understand how they can reduce their impact on climate change and how they can adapt to it

Waste to Resources Our Waste to Resources strategy aims to improve recycling in Colchester

Eco-Schools It is important that we educate the young people in Colchester about sustainability

Warm Homes We will tackle fuel poverty and climate change in the borough by helping people to get their homes insulated

Private Sector Housing The Home Energy Conservation Association (HECA).

A vital role for any local authority is to provide strong community leadership and with an issue such as climate change it is essential that CBC embraces this role. Everyone in Colchester has the ability to make a difference, and we aim to help and support them to do just that.

By showing people what we have managed to achieve through a limited budget we will encourage others to do the same. Our own awareness campaign has had a massive impact on our carbon emissions and will save us thousands of pounds, even better, it was virtually free to do.

Colchester2020 – The ‘Carbon Challenge’.

30% reduction in Carbon Dioxide by 2020

As a member of the Local Strategic Partnership (LSP), Colchester2020, we have committed to Colchester’s Carbon Challenge. Through this we will be working with the partners to show best practice across the borough. In order to achieve a 30% reduction by 2020 we will be prioritising working with businesses and raising awareness across the wider community. Within Colchester, small and medium sized businesses are responsible for around 32% of CO₂ emissions; this could be significantly reduced by offering help and support for them to become more energy efficient. To maximise our impact we will be looking to develop strong partnerships with organisations that have an expertise in working with businesses and that could help us to source funding.

As always, creating wider awareness on issues of climate change across the borough is a major priority. By declaring a ‘Carbon Challenge’ for the whole of the borough, Colchester2020 has shown that it is vital for everyone to get involved.

Colchester’s Carbon Challenge

Where are we now?

The ‘Carbon Challenge’ was made in February 2008 and the Colchester2020 Sustainable Communities Strategy sets out the action plan for reducing Carbon Dioxide by 30% across the borough.

Where do we want to be?

We want to help businesses in Colchester to become more energy efficient and raise awareness across the borough to encourage residents to be more efficient in their homes.

How will we do this?

We will use partnerships to help us target businesses that could benefit most from help in saving energy by using organisations such as Groundwork. We will raise awareness through the CRed pledge scheme.

CRed Essex

Where are we now?

We have received around 700 energy saving pledges from Colchester residents which could save around 300 tonnes of CO₂.

Where do we want to be?

We will increase the number of pledges from across the borough. Each year CBC will aim to get 2000 pledges.

How will we do this?

We will work in partnership with Essex County Council. We will have CRed information stands and pledging opportunities during all awareness raising events. We will use various methods to advertise and promote the scheme.

Raising Awareness

Where are we now?

We have a successful awareness campaign within the Council. As a partner in Colchester2020 we have held events around the launch of the Carbon Challenge. We have developed various educational material for residents and businesses.

Where do we want to be?

We want to reduce CO₂ emissions for Colchester by raising awareness of energy efficiency and the impacts of climate change. We will reach a large proportion of Colchester's population through events, mail-outs and our website and will measure the effectiveness of this through CRed pledges and energy use data for the borough.

CRed Essex – Pledges that could make all the difference



We are working with CRed Essex to get as many pledges from Colchester businesses and residents as possible. All of the pledges can then be converted into carbon dioxide saved if everyone manages to keep them up. By doing this we should be able to

estimate how much CO₂ we have saved through awareness campaigns across the Borough. Colchester2020 has committed to getting a 25% pledge rate for the population of Colchester and we will be helping them to achieve this target.

www.cred-uk.org/essex/

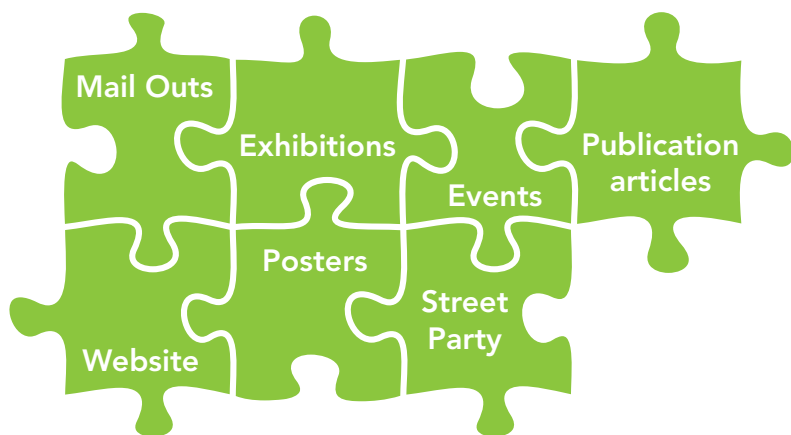
The scheme works by the individual or business making a pledge online or on a form to reduce their own emissions through simple changes like switching to energy saving light bulbs. We will promote this scheme through various awareness events, our website and our publications.

Engaging people and allowing them to make a personal commitment not only gives them an extra push to make changes but will also make them consider their impact on the environment. We will offer advice and information to people in Colchester to help them achieve any pledges they make.

Each year, about nine tonnes of CO₂ is released for every person in the UK – enough to fill five hot air balloons. To make this 60% cut, each of us needs to lose the equivalent of three hot air balloons every year. The Community Carbon Reduction Programme, CRed, aims to achieve this by 2025.⁽⁹⁾

Raising awareness

CBC carried out a successful awareness campaign through the LACM, it was developed to stand out and grab people's attention by making it fun yet informative. Giving simple tips and advice on how we can be more energy efficient in a fun way can help to keep people engaged. 'Climate Change' now often holds many negative connotations especially as it is a topic that is often forced upon people through the media. CBC will take a positive stance when raising awareness and show that it doesn't have to be complicated or difficult to do something. When it comes to the environment, even the smallest actions really do make a difference. There are many easy changes we can make in our everyday lives to help protect and improve our environment – it just involves a little extra thought in what we do.



Raising awareness also means educating people and businesses on how they can adapt to the effects of climate change. Businesses based on coastal and estuarine areas could need an increase in coastal protection funding and higher insurance premiums are almost certain with the increased occurrence of flooding. However, new market opportunities and business diversification will help to mitigate any negative effects. A business that is known to be 'green' may now have an advantage over its rivals as the demand for environmentally friendly products and services is increasing.

How will we do this?

We will launch the Nottingham Declaration Action Plan through an energy awareness week. This will include working with partners and other organisations. We will be developing posters for the Borough and will be promoting our website for more information. In order to work with as many SMEs as possible, we will need to create partnerships with other organisations. We also want to identify which businesses are doing a lot to become more efficient and celebrate these achievements. We will be working with community groups to hold sessions on climate change and to also help them become more efficient.

Residents

We will engage with residents in Colchester on climate change by promoting what we as a Council are already doing and how easy it is to become a little more efficient. An example of how we will do this is by putting large messages on the side of our waste and recycling fleet. These vehicles visit every household in the borough which makes it a simple way to access every resident.

Community Groups

Within Colchester there are many established voluntary and community groups, some of which already work with the Council through the Community Developments team. This is a great opportunity to use the connections we have by contacting these groups with information on climate change.

A good example of the work already being carried out by the Community Development Team is 'Give and Take Days.' En-form, an environmental information centre, recently obtained funding to hold 'Give and Take Days' that would allow people to give things they no longer want to someone that can make use of it. The Community Development Team promoted the scheme to the voluntary and community groups that they work with.

Businesses

Potential barriers to adaptation and mitigation for businesses may include a lack of awareness about climate change and expertise about how to exploit internal efficiencies or new revenue opportunities. The time and money required to make proposed changes could also compete with other priorities they have. To help overcome these barriers CBC aims to ensure businesses have access to information on climate change and related legislation, taxation and technology, to allow a proactive approach.

We will work with businesses to help them make the most of opportunities presented to them and mitigate exposure to any apparent risks from climate change. To support businesses CBC is helping to set up a business resource efficiency club, to bring local businesses together to address climate change issues.

Waste to resources

Where are we now?

Colchester recycled 20.4% (12,619 tonnes) of all the waste produced by households in the borough in 2007/08 and composted 12.39% (7,667 tonnes) giving an overall recycling rate of 32.79%. This means that Colchester produced 362kg of household waste per person in 2006/07.

Where do we want to be?

By working towards recycling targets in the Local Area Agreement, CBC wants to achieve 26% recycling and 14% composting across the borough by 2011. CBC will also work towards reducing the amount of residual waste that is sent to landfill and the target for this is an average of 508kg per household by 2011.

How will we do this?

We will assess our options to use the most suitable in terms of performance and cost to meet the objectives of the Waste to Resources Strategy. We will be focusing on waste minimisation and will continue to raise awareness of this across the borough.



Waste to Resources



CBC has a Waste to Resources Strategy which sets recommendations to improve recycling in the borough.

As a society, we are consuming natural resources at an unsustainable rate. If every country consumed natural resources at the rate the UK does, we would need three planets to live on. Using the planet's resources within the limits of its eco-systems is vital to the survival, health and prosperity of future generations. Waste management generates carbon dioxide and methane. Methane emissions from (biodegradable waste in) landfill account for 40% of all UK methane emissions and 3% of all UK greenhouse gas emissions.

The Council's vision for the future of waste management in the borough is one where:

- Less waste is produced by everyone
- There is an active reuse culture
- Home composting is 'the norm'
- Being able to recycle is easy for everyone
- More waste is recycled and composted than sent to landfill
- The collection service is high quality
- There is high customer satisfaction with the service.

In order to make significant improvements in waste management we must follow three processes:

Waste prevention – avoiding unnecessary waste like excessive packaging to reduce the demand for raw materials. Waste prevention is the most important aspect of waste management in terms of greenhouse gas reduction.

Reuse – is a way of prolonging the life of resources. There are many ways in which we can reuse things or pass them on for others to use rather than throw them away.

Recycling and composting – can allow valuable resources to be used again and save energy in the process. Amazingly, recycling an aluminium can requires only 5% of the energy it takes to make a new aluminium can and each tonne of aluminium recycled saves 11 tonnes of CO₂.

The Strategic Waste team develop schemes to get more residents, schools and businesses recycling. Another major aspect of the waste going to landfill is food. When we throw food away, we also waste all the carbon generated as it was produced, processed, transported and stored. This is particularly important given that the whole food supply chain accounts for around 20% of the UK's greenhouse gas emissions. We could make carbon savings equivalent to taking an estimated 1 in 5 cars off the road if we avoided throwing away all the food that we could have eaten.

Eco-Schools



It is vital that we educate young people in Colchester about environmental issues, as they will be the people who have to live with and deal with the longer term impacts of climate change. The Government has made it clear that they want every school to

be sustainable by 2020. For this reason we are now supporting Eco-Schools which is an international award programme that guides schools on their sustainable journey, providing a framework to help embed these principles into the heart of school life.

The Eco-Schools programme consists of nine key environmental topics – water, biodiversity, energy, global perspectives, healthy living, litter, school grounds, transport and waste. The benefits to schools not only include financial and environmental improvements but the programme can also be used as an educational tool and to forge better links with the community.

The Strategic Waste team will be encouraging schools to join this programme by carrying out waste audits and offering presentations and activities for schools that sign up. In the first year of supporting this scheme we have already seen 42 schools in Colchester signing up with many more showing an interest.

Eco Schools

Where are we now?

42 Schools have signed up to Eco-Schools in Colchester so far.

Where do we want to be?

We want to improve recycling and environmental awareness in Colchester schools. To do this we want to get as many schools as possible signed up to the Eco-Schools programme from across the borough.

How will we do this?

We will be offering trade waste contracts to schools that sign up to the programme which could offer significant financial savings. Schools that agree to sign up will also be able to access talks, presentations and activities for their pupils.



Warm Homes

Where are we now?

The Warm Homes Project has been operational for 7 years, and during this time has assisted more than 4,000 households in the borough. This has had a big impact on CO₂ reduction.

Where do we want to be?

We want more local people to live in warm, affordable and energy efficient homes. This is particularly important with the continuing rises in energy and fuel costs.

How will we do this?

We will identify as many residents at risk of fuel poverty as possible and then help them to maximise their income, reduce their fuel needs and increase the energy efficiency of their homes. We will continue to hold awareness raising campaigns through the local media and to liaise with internal and external partners to identify sources of practical and financial help available to local people.

Warm Homes

Almost of a third of the heat is lost from an un-insulated home, which means that £1 of every £3 spent on heating bills is being wasted. Our Warm Homes project raises awareness of the benefits of getting your home fully insulated not only around health and fuel poverty but also the potential environmental impacts. Between April 2007 and March 2008 the Team had contact with more than 700 households in the borough. This project is vitally important in a time where fuel prices are rising so rapidly and in response to this 'fuel poverty' crisis we will be promoting insulation as a way to cut costs for those most at risk. Each home that is insulated can save around 1.7 tonnes of CO₂, and we feel that this is a great opportunity to reduce Carbon Dioxide emissions.

CBC has a Warm Homes project officer who is dedicated to help the residents of Colchester with heating and keeping warm at home.

How Warm Homes can help:

- They can check if the customer is eligible for a grant for insulation or heating
- For customers not eligible, they provide information on other discount schemes
- They give energy efficiency advice
- They can help the customer access a Credit Union loan for measures such as a new boiler
- They can put the customer in touch with other agencies that may be able to help
- They can give presentations and energy efficiency quizzes
- They raise awareness about the health effects of cold damp housing.



Private Sector Housing – UK Home Energy Conservation Association (UK HECA)



HECA aims to secure improvements in energy efficiency in the domestic sector. The act made all Local Authorities become Energy Conservation Authorities, giving them responsibilities to record, and report, data showing the improvement in energy conservation in their areas. The UK HECA is a network of support groups made up of local government HECA officers.

CBC has an officer leading energy efficiency in the Private Sector Housing Team. As part of this the Housing Health and Safety Rating System (HHSRS) can help to identify properties suffering from hazards linked to poor energy efficiency and disrepair. The Private Sector Housing Officers can use HHSRS to take informal action and where necessary enforcement action to remove or reduce the hazards to acceptable levels.

How can CBC's Private Sector Housing team help?

- They can offer financial help to top up Warm Front Grants where clients cannot afford their contribution
- They offer financial assistance to help eligible owner occupiers or leaseholders improve their homes
- They identify customers who could benefit from grant funded energy efficiency schemes and refer them to our Warm Homes Team.

CBC is a member of the following groups;

- Eastern Home Energy Officers Network (E-HEON)
- National Energy Action (NEA)
- Carbon Reduction Officers Essex (CO₂RE)
- UK Home Energy Conservation Association (UK HECA).

Private Sector Housing – Home Energy Conservation Act (HECA)

Where are we now?

CBC's lead officer for energy efficiency in the Private Sector Housing Team offers assistance for homeowners and leaseholders to improve the energy efficiency of their homes.

Where do we want to be?

We want to promote energy efficiency and reduction in CO₂ emissions through the education of team members, providing information and expertise to local residents and landlords and improving the scope of financial assistance we are able to offer.

How will we do this?

We will revise our Financial Assistance Policy to further help people and to include renewable energies where they currently fall outside the qualifying criteria for existing assistance. We will continue to source other funding and grants. We will continue to develop promotional and educational material and ensure it reaches as wide an audience as possible. The Private Sector Housing Team will continue to improve their level of expertise in this area.

Priority 3 Delivering Sustainable Services

Targets CBC has several targets relating to climate change through the Local Area Agreement and the LACM

GMT agendas We will put sustainability high on the agenda for our Group Management Teams

Corporate Strategies We will embed climate change and sustainability across the Council – which means into all corporate strategies and objectives

Travel Plan Through the Colchester2020 Travel Plan Club we will ensure that our staff are using the best modes of transport to help protect our environment

Energy Performance of Buildings Directive We will be required to display Energy Performance Certificates in our buildings.

We need to secure support from across the Council and include climate change objectives in our corporate strategies. Priority 3 lays out how we will ensure that climate change is at the top of the agenda for the Council.

This priority not only includes our Nottingham Declaration commitments but also statutory obligations that the Council has. We will be required to meet requirements made by central government, for example the 'Energy Performance of Buildings Directive' and will also be required to participate in future schemes such as the 'Carbon Reduction Commitment'.

Our Targets

Where are we now?

We have national, regional and local targets.

Where do we want to be?

We want to ensure that each of our targets is monitored appropriately to ensure that they are progressing well and being achieved.

How will we do this?

The Nottingham Declaration Strategy will help to bring all of CBC's targets together. A full Nottingham Declaration Action Plan will be developed to allow monitoring of all targets.

Our Targets

As part of the Local Area Agreement we have several priorities that require us to act on issues around climate change. National Performance Indicators (NPIs) are created by Government and the Council can choose 25 which are priorities to them. For CBC, 5 out of the 25 priorities relate to climate change. These NPIs are:

- CO₂ reduction from local authority operations
- Per capita reduction in CO₂ emissions in the LA area
- Planning to adapt to climate change
- Air quality % reduction in NO_x and primary PM10 emissions through local authority's estate and operations

These targets will be monitored through the Nottingham Declaration alongside the LACM and Carbon Challenge.

'In 2007, UK net emissions of carbon dioxide were provisionally estimated to be 543.7 million tonnes. This was 2% lower than the 2006 figure of 554.5 million tonnes. The decrease resulted from fuel switching from coal to natural gas for electricity generation, combined with lower fossil fuel consumption by households and industry.'

Source – Defra

GMT agenda

In order to embed sustainability into all of our services, it is important that we have the Group Management Teams (GMTs) on board. As the managers within a service they will have the knowledge and understanding about how we can incorporate these issues in a suitable way. We will ensure that climate change is on the agenda for GMT meetings; CBC's Climate Change Officer will co-ordinate this to provide frequent progress reports.

Corporate Strategies

CBC's Strategic Plan is a vital document because it sets out what we will do to maintain and improve the quality of life in the borough. It commits us to making sure that providing excellent day-to-day service remains at the very heart of what we do. Climate Change will be incorporated into the Strategic Plan to show that we are committed to these issues.

The Council is made up of several service areas, each of which has a 'Group Summary Service Plan'. These documents set out the core objectives for that service; sustainability and climate change will be included as one of these objectives.

We must also be prepared for legislative requirements such as the 'Carbon Reduction Commitment'.

Travel Plan

Colchester2020 Travel Plan Club

The Council developed a travel plan to cover employees' journeys to and from work and

on business. The travel plan promotes sustainable transport and reducing the need to travel, especially by private car. A package of measures has been developed including:

- Discounted public transport tickets
- Discounts on bikes for work
- Facilities for cyclists and walkers
- Car share schemes
- Parking charges
- Better information and a personal travel planning service.

By addressing all aspects of travel within the Council, including the sustainability of business partners' travel, we are able to positively contribute to air quality and climate change targets.

The Council, along with other LSP members, is a member of the Local Strategic Partnership's Travel Plan Club. All have their own tailored travel plan that promotes alternative travel to their staff, students and visitors. Working collectively enables the Club to secure better deals, for example with bus operators. The Club is working to expand its membership to include more organisations in Colchester to increase the impact on reducing emissions.

GMT

Where are we now?

The Senior Management Team have agreed for climate change to be on the agenda at Group Management Team (GMT) meetings.

Where do we want to be?

We want GMTs to lead on climate change in their services areas.

How will we do this?

Climate change will be on the agenda for GMT meetings.

Corporate Strategies

Where are we now?

Council strategies do not have climate change objectives.

Where do we want to be?

We want all Council strategies to have climate change objectives. We will participate in the Carbon Reduction Commitment (CRC).

How will we do this?

We will revise our strategies to include climate change objectives. We will have a lead officer for the CRC to ensure we comply with the scheme.

Travel Plan

Where are we now?

CBC has a travel plan and is a member of the Travel Plan Club to help promote more sustainable travel options.

Where do we want to be?

We want every Colchester business and organisation to have their own travel plan to reduce car use across the borough.

How will we do this?

By strengthening and promoting our own travel plan to lead by example and continuing our support of the Travel Plan Club.

Energy Performance of Buildings Directive (EPBD)

Where are we now?

We do not have Energy Performance (EPC) or Display Energy Certificates (DEC) in our buildings.

Where do we want to be?

We now have DEC's for the Town Hall, Angel Court and Leisure World. We will require EPC's for some of our buildings that sit under our Estates service such as the community stadium. These need to be obtained when the property is built, sold or re-let.

How will we do this?

The DEC's will be provided by our energy management company.

Energy Performance of Buildings Directive (EPBD)

Buildings in the UK are responsible for almost 50% of our energy consumption and carbon emissions. Measures are now being introduced to help improve the energy efficiency of our buildings which includes the use of Energy Performance Certificates (EPCs) and Display Energy Certificates (DECs). Both these certificates will give buildings an energy efficiency rating of between A-G (A being most energy efficient) and will also set out recommendations for improvement.

The scheme began on 1 October 2008. An EPC will be required for any new building, or for any existing building when it is sold or leased. DEC's are required for any public buildings over 1000m². The buildings must display the certificate in a public area and fines will be introduced for building owners that do not produce an EPC or display a DEC as they should.

CBC currently has three buildings that meet the criteria for a DEC namely the Town Hall, Angel Court and Leisure World. Once we have the certificates in place they are reviewed annually, but they will only need to change pending some major alterations or improvements to the building.



Priority 4 Using our powers

Local Development Framework (LDF) A sound and robust LDF can ensure future developments in the borough will be sustainable

Building Control Our team of building control surveyors ensure that new buildings meet the Building Regulations set by Government

Procurement We want to use our impact on the marketplace to demand more sustainable products and services from suppliers

As an employer CBC employ more than 1000 people, we have the ability to ensure that sustainability and energy efficiency is part of the job.

As a local authority, CBC has significant influence across the borough not only through our own actions but through the level of control we have over others such as the planning system. It is important that through Priority 4 we harness this influence to its best advantage and use our powers to ensure we develop a more sustainable borough for the future.

Local Development Framework (LDF)

The Planning and Compulsory Purchase Act 2004 places a duty on local planning authorities to contribute to sustainable development. The Council is committed to this through better decision-making and adaptation strategies in policy areas such as developments on floodplains, waste management, business support, habitat management, transport infrastructure and urban design.

Planning and Resource Conservation

Developments should be designed to minimise their overall demand for natural resources. Proposals for development will need to take into account, for example:

- The opportunity to reuse buildings.
- The opportunity to reuse building materials and/or the use of sustainably sourced and local materials.
- The design of long-life and flexible buildings.

Local Development Framework (LDF)

Where are we now?

The Local Development Framework consists of a portfolio of documents that will act as the blueprint for future development in the Borough. The first of these documents, the Core Strategy, underwent an Examination in June/July 2008, it was adopted in autumn 2008. The Site Allocations Development Plan Document (DPD) and Development Policies DPD are being progressed in parallel. An Issues and Options Paper for both DPDs was consulted upon in December 2007 and a Preferred Options document issue to be consulted upon in early 2009.

Where do we want to be?

We want to have a sound and robust LDF that will achieve sustainable development and tackle climate change.

How will we do this?

We will work with stakeholders and the public to ensure that the LDF can be delivered and will not result in any adverse impacts on, for example, the highway network, sites of importance for nature conservation and existing communities.

As a local planning authority, the Council is producing an LDF, which will:

- Direct development to sustainable locations, with a range of services and facilities.
- Reduce the need to travel and promote sustainable modes of transport.
- Provide a framework to support renewable energy and low carbon technologies.
- Promote sustainable design and construction.
- Provide measures to enable the borough's biodiversity to adapt to environmental changes driven by climate change, for example green infrastructure.
- Protect properties at risk from rising sea levels and increased risk of flooding.

Planning Policy Statement 22 (PPS22) – Renewable Energy

Renewable energy can contribute to tackling climate change and under PPS22 local planning authorities have more powers to encourage the use of this. Under the Core Strategy, at least 15% of the energy from new developments is to be provided by renewable or low carbon technologies where feasible.

Coastal Defence



The Council has due concern for coastal defences, which may be compromised by sea level change. The Council supports the Government's aims and objectives for flood and coastal defence and is committed to achieving a more integrated coastal zone management system.

As part of the LDF, a Strategy Flood Risk Assessment has been carried out which models the risk of flooding based on various scenarios, there is a strong presumption against development in any area found to be at risk. The Council will work with the Environment Agency to ensure improved flood forecasting and warning systems are in place.

The Council is also involved in the development of the second Shoreline Management Plan for Essex, which will set out a sustainable management programme for the Borough's coastal defences in the future.

Changing Travel Behaviour and Transport Infrastructure



Road, and particularly car, transport accounts for around 25% of all CO₂ emissions. The Council is committed to reducing dependence on car use in Colchester particularly for short, local journeys, where there are significant health benefits from walking or cycling instead, as well as large carbon savings. Colchester has been awarded Cycling Town Status and will improve the existing network, educate, and market the benefits of cycling to the community. Our target is to increase cycling levels by 75% by 2011. Colchester North Station is one of 31 stations to have been awarded Station Travel Plan Pilot Status. With our partners we have a number of objectives including reducing Carbon Dioxide emissions by reducing

single car occupancy trips to the station and increasing walking, cycling and public transport. The Council will seek to set up a travel behavioural change programme focusing on existing communities to complement existing travel plan activities.

Improved promotion and facilities for alternatives to the private car such as public transport services will be made in partnership with Essex County Council, the Transport Authority and transport operators. Congestion is a priority issue and in the town centre it greatly affects the operation of public transport services. A strategy for wider improvements to the town centre will seek to make improvements for reliable operation of public transport.

We will work with developers to ensure new developments have good access to amenities and services by sustainable means. Where developments are close to the town centre 'car free' or 'low car' developments will be promoted. The Council is currently piloting a 'Low Emissions Parking Scheme' which is one of the first of its kind in the UK, in Sheepen Road Car Park. This scheme allows the customer to access cheaper parking if their car is within a low tax bracket (below B). The basis of the idea is to influence behavioural change through car park charges to encourage more sustainable forms of transport such as walking and cycling. For those that are unable to participate in more sustainable transport, this scheme will offer an incentive for the use of more efficient cars. If this pilot scheme is successful it will be rolled out to all other, Council owned, long stay car parks.

Limited improvements to the road network will be made, including the A133 Central Corridor, providing a new A12 Junction and Northern Approaches to relieve pressure on congested corridors and accommodate growth in a sustainable manner. We support the Highways Agency in enhancing the A12 trunk road to improve the reliable operation of this route through the Borough

Development Control



There are potentially huge CO₂ savings to be made with the existing building stock, for example retrofitting and refurbishment standards.

We aim to give residents in Colchester advice on how they can best adapt their homes to become more energy efficient, including the promotion of insulation and giving advice for the use of renewable energy.

Building design is likely to be very different in the future. Changes in the weather, such as with rainfall, wind and the frequency of storms will put extra pressure on buildings, and we must ensure that the existing housing stock can stand up to this and ensure residents are safe in their homes.

We have the ability to grant planning applications to help people to be more sustainable. However schemes will need to demonstrate that they will not result in adverse impacts for example, noise pollution, visual pollution and impacts on residential amenity. The Development Policies DPD will include a policy on renewable energy schemes, which will set out the key criteria that will be used to judge planning applications.

Building Control

Where are we now?

The Building Control Service offers advice and ensures that all controlled buildings meet energy efficiency standards.

Where do we want to be?

The Government has set plans to increase energy efficiency standards in 2010, 2013 and 2016 to achieve carbon zero homes for the future. Our team will enforce these standards.

How will we do this?

By administering the Building Regulations to ensure works are carried out in accordance with Government standards.

Procurement

Where are we now?

Research has been carried out into some areas of procurement, for example our paper supply. We use 72 tonnes of paper a year, and by changing the type of paper we use we can reduce the amount of carbon dioxide created through the manufacturing process by half.

Where do we want to be?

We want the procurement strategy to ensure that all of the products and services we use are from the most sustainable source possible.

How will we do this?

To achieve this, sustainability must be fully embedded into the procurement process through the strategy and also staff training.

Building Control



The building control team provide technical advice on all building regulations including energy conservation. The building control surveyors enforce building regulations throughout Colchester, which includes ensuring the conservation of fuel and power in new and existing buildings. The scope of the regulations is continually expanding and water conservation is soon to be included.

New buildings must achieve an individually set sustainability standard, be it through insulation, efficient heating or the installation of renewable energy sources. This area is set to become more vital in issues of climate change as the Government has already increased energy efficiency standards for new buildings by 20% based on 2002 regulations. This will rise again in 2010 and 2013 with a view to achieving zero carbon by 2016. The Code for Sustainable Homes states that new homes must meet certain criteria in terms of energy efficiency, water conservation, materials, waste, pollution, health and wellbeing, management and ecology. This is currently voluntary but is likely to become part of statutory building regulations in the near future.

Procurement

Colchester Borough Council has revised its Procurement Strategy to ensure that any services or goods we use will be commissioned with sustainability in mind to minimise environmental impact.

Goods produced locally have less carbon associated with them as they have travelled less from source to end use. Additionally the Council must look at whole-life issues by taking into account ease of recycling and end of life disposal costs.

The public sector spends around £150 billion each year on goods and services, showing the scale of the impact we could have on the local marketplace. We will use this influence to encourage suppliers themselves to become more sustainable and by working in partnership with organisations such as the Essex Procurement Hub can maximise the impact of this.

As an employer

Where are we now?

We have an awareness campaign to promote sustainable energy use.

Where do we want to be?

We want each member of staff to actively reduce the energy they use and become more sustainable.

How will we do this?

We will continue with our awareness campaign. We will include sustainability in people's individual objectives.

As an employer

Colchester Borough Council is a large employer in the borough with more than 1000 employees. It is important that all Council employees are actively reducing the energy they use at work and for this reason we will include an aspect of sustainability in each individual's objectives. We will ensure that any new employees are aware of our Nottingham Declaration commitment and our focus on sustainability and energy efficiency as a top priority. To share this message we will include sustainability in induction training to support the general staff awareness campaign.

We are keen to listen to our employees and have carried out a staff survey to establish what our employees already do, their opinions on sustainability issues and also their suggestions on what we should be doing. We had a great response rate of 268 completed surveys which gave us some strong positive feedback. From the results we found that 96% of employees believe that climate change is happening and will affect them and their families, and 99% said that they think it is the Council's duty to reduce our carbon footprint.

If you need help reading or understanding this document, please take it to our Customer Service Centre, High Street, Colchester.

Textphone users should always dial 18001 followed by 01206 282222.

We will try to provide a reading service, a translation, or any other format you need.

“Nobody makes a greater mistake than he who does nothing because he could only do a little”

Edmund Burke (1729-1797)

